

N.W. 1/4 OF SECTION 8, T.6N.,R.1W., S.L.B.&M.

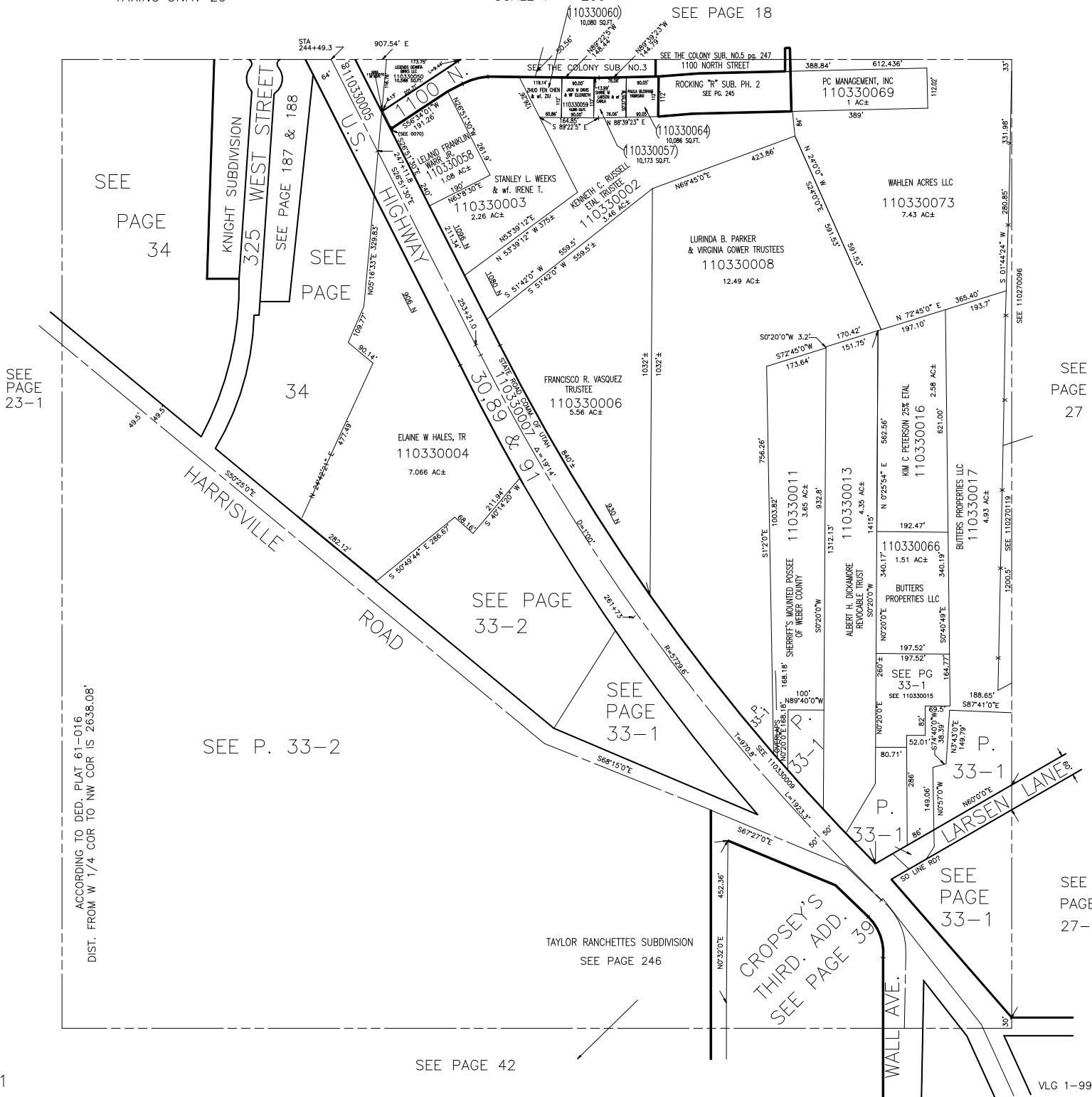
HARRISVILLE CITY

SCALE 1" = 200'

ALSO SEE PAGES 33-1, 2

TAXING UNIT: 20

SEE PAGE 18



SEE PAGE 34

SEE PAGE 34

SEE PAGE 23-1

SEE PAGE 27

SEE PAGE 33-2

SEE PAGE 33-1

SEE P. 33-2

ACCORDING TO DED. PLAT 61-016 DIST. FROM W 1/4 COR TO NW COR IS 2638.08'

CROPSEY'S THIRD ADD. SEE PAGE 39

SEE PAGE 33-1

SEE PAGE 27-2

SEE PAGE 42

VLG 1-99